

Simplot[®]

WESTERN
STOCKMEN'S

Helping You Raise Healthy Animals[™]



NEED HELP? PLEASE CALL:



BURLEY STORE • 208.878.7224

CALDWELL STORE • 208.459.0806

JEROME STORE • 208.733.6145

SUNNYSIDE STORE • 509.836.0267

PUBLISHED NOVEMBER 2023

© 2024 J.R. Simplot Company. All rights reserved.

CONTENTS

INTRODUCTION

2 THE SIMPLOT STORY

4 SWS OVERVIEW

MANUFACTURED

10 SUMMARY

12 SWS PROTEIN BLOCKS

13 SWS CALF GRAIN

14 SWS MINERALS

16 SWS RANGE CUBE

17 MEDICATED CATTLE SUPPLEMENTS

18 SWS FEED AND SUPPLEMENTS

20 CUSTOM FEEDS

SEED STORE

22 SUMMARY

23 FORAGE PRODUCTS

EQUINE

24 PRODUCTS

25 BLUEBONNET FEEDS

26 EQUINE BRANDS

TOP BRANDS

29 ALLFLEX

30 BEHLEN COUNTRY

31 BOEHRINGER INGELHEIM

32 CENTRAL LIFE SCIENCES / ALTOSID IGR

33 CENTRAL LIFE SCIENCES / CLARIFY

34 CENTRAL LIFE SCIENCES / STARBAR

35 COUNTRY VET

36 DATAMARS

37 DESTRON FEARING

38 DIAMOND

39 DURVET

40 ELANCO

41 MERCK ANIMAL HEALTH

42 MILLER MANUFACTURING COMPANY

43 POWDER RIVER

44 PURINA / LAND O' LAKES

45 REAL-TUFF

46 Y-TEX

47 VITALIX

48 W-L ALFALFAS

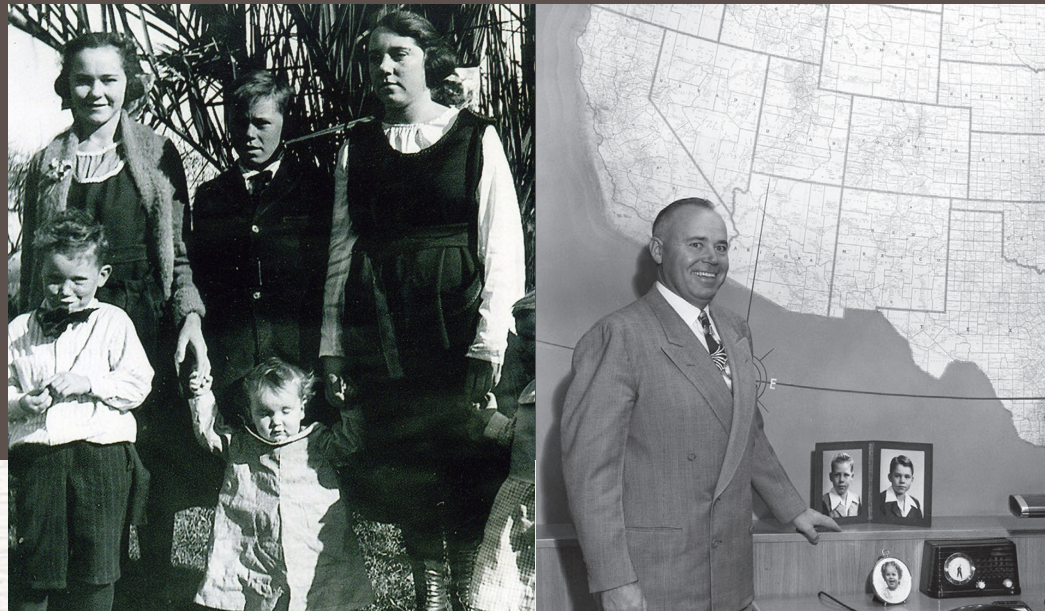
49 ZOETIS

THE Simplot

The Simplot brand began to take shape in the farm fields of southern Idaho nearly 100 years ago when young J.R. "Jack" Simplot went in search of his fortune at age 14. He was prepared with everything he needed to succeed in this uniquely American story: an eighth-grade education, keen instincts, constant curiosity matched to boundless energy, and an irrepressible belief in the promise of the possible.

J.R.'s business grew and diversified as he matured, but the essence of the brand remained the same, drawing purpose and strength from the unique character and drive of its founder. Springing from Jack's spirit of ingenuity and determination, Simplot created and marketed the first commercially viable frozen French fries in the world during the early 1950s. This innovative use of technology was just one of many instances in our company's history when new thinking propelled significant growth.

Today, the J.R. Simplot Company is a dynamic, multibillion-dollar global agribusiness leader with operations in the U.S., Canada, Europe, Mexico, Australia, and other regions around the world.



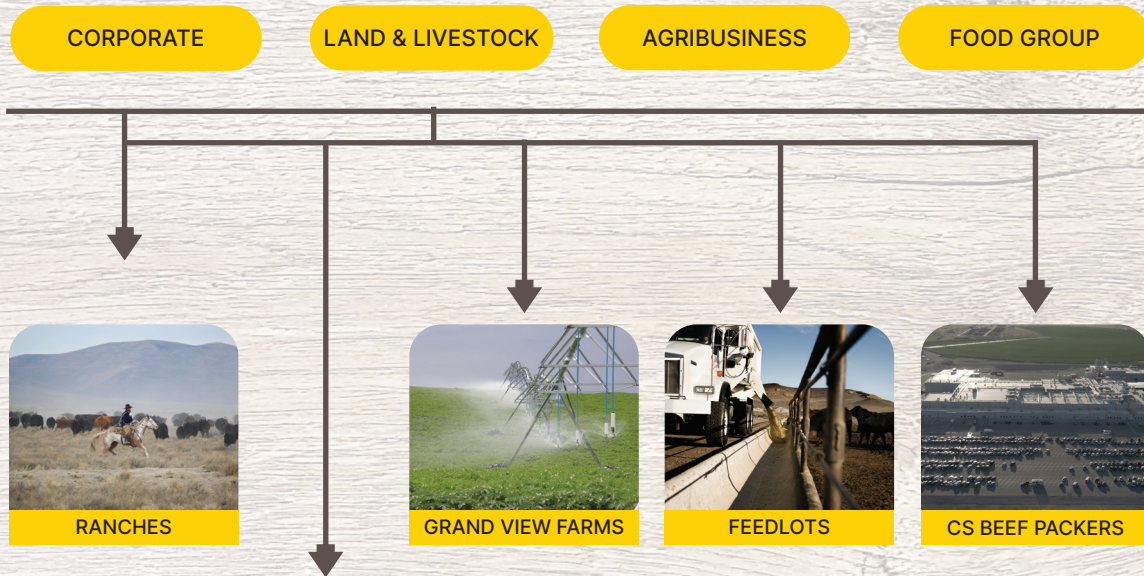
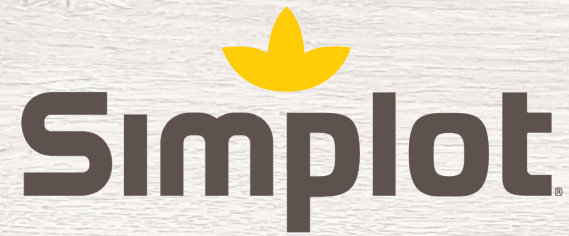
STORY

More than 13,000 employees around the world constantly explore innovative ways to grow, process and deliver food, help farmers and ranchers optimize profits, and make everyone's lives a little better.

Many things have changed at Simplot over the years, but J.R.'s bedrock vision carries forward: work hard, give honest value, be good partners, and - today more than ever - treat the earth and its bounty as a precious resource to be respected and protected every day.

Inspired by this vision, we look forward to another 100 years of executing our company mission:

"Bringing Earth's Resources to Life."



Simplot Western Stockmen's is part of the Simplot Land and Livestock division, maintaining a strong presence throughout the Pacific Northwest in both the animal health and animal feed markets.

While other parts of our division raise and care for cattle, Simplot Western Stockmen's supplies the products to maintain operations, big and small, keeping animals healthy.



SIMPLOT WESTERN STOCKMEN'S

Since 1959, the people behind Simplot Western Stockmen's have been customer-focused and quality-driven. Our diversity of products within the livestock and agriculture industries include animal health, feed, mineral nutrition, livestock equipment, pest control, and more.



To maximize your livestock operation's performance, we have a three part goal ...

<p>ADVANCE THE QUALITY OF NUTRITIONAL PRODUCTS</p>		
	<p>PROVIDE FOR THE PHARMACEUTICAL AND BIOLOGICAL NEEDS OF ANIMALS</p>	
		<p>SUPPLY FULL SEED AND COMMODITY SERVICES</p>

STORES

BURLEY

1001 West Main Street - Burley, Idaho 83318 - 208.878.7224

CALDWELL

101 Rodeo Avenue. - Caldwell, Idaho 83605 - 208.459.0806

JEROME

1100 West Main Street - Jerome, Idaho 83338 - 208.733.6145

SUNNYSIDE

213 Yakima Valley Highway - Sunnyside, Washington 98944 - 509.836.0267

WAREHOUSES

BILLINGS - 406.596.2267

PRINEVILLE - 541.699.8347

HEADQUARTERS

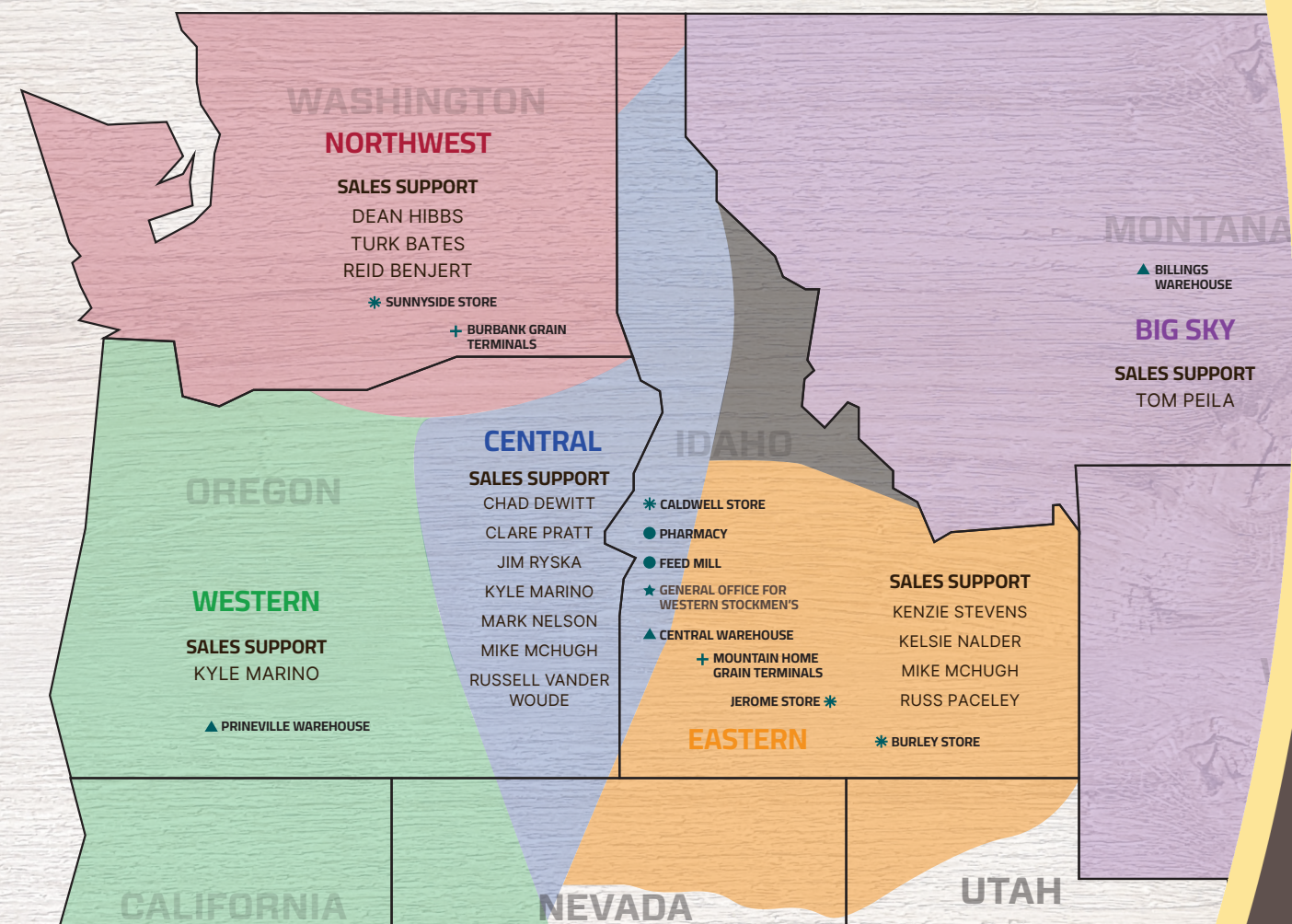
223 Rodeo Avenue - Caldwell, Idaho 83605 - 208.459.0777

We also own and operate two commodity terminals.

Find these locations on page 17.

With locations in both Idaho and Washington, we do business across the Pacific Northwest selling manufactured feed, top-brand animal health products, and much more to support your operation.

SEE OUR LOCATIONS BELOW!



KEY

- * STORE LOCATIONS
- + TERMINALS
- ▲ WAREHOUSES
- FEED MILL
- PHARMACY

SALES TERRITORIES

- NORTHWEST
- WESTERN
- CENTRAL
- EASTERN
- BIG SKY
- ★ GENERAL OFFICES FOR WESTERN STOCKMEN'S

SALES TEAM

When we sell our products we know the stakes are high and we put our customers first. Our values are rooted in integrity and hard-work. As a result, positive working relationships have formed the bedrock of our company.

As leaders in the animal health and feed industry we know your operation has to be cared for the right way. That is why we listen to your needs and recommend what is best for you and your animals.

With fast service and valuable resources, we make sure your needs are met consistently and conveniently. We offer expert consultation, Simplot stability, depth, and genuine care for your business.

No matter how you decide to utilize our various products and services, with over 300 years of combined experience, our sales team is ready to help you raise healthy animals.

LET US SHOW YOU WHAT WE CAN DO.

"Providing a mutually successful environment where our customers, suppliers and Simplot Western Stockmen's exist with profit, care and understanding." - BEN GAVICA

MEET OUR STAFF

DAIRY



CLARE PRATT
CENTRAL TERRITORY
C: 208.369.7869



DEAN HIBBS
NORTHWEST TERRITORY
C: 509.420.3320



KYLE MARINO
WESTERN TERRITORY
C: 541.699.8347



MICHAEL MCHUGH
CENTRAL AND
EASTERN TERRITORY
C: 208.250.7339



RUSSELL PACELEY
EASTERN TERRITORY
C: 208.312.0357



KELSIE NALDER
EASTERN TERRITORY
C: 208.421.4756



RUSSELL VANDER WOUDE
CENTRAL TERRITORY
C: 208.943.1021

BEEF



CHAD DEWITT
CENTRAL TERRITORY
C: 208.891.0324



JIM RYSKA
CENTRAL TERRITORY
C: 208.890.4312



KENZIE STEVENS
EASTERN TERRITORY
C: 208.731.2117



KYLE MARINO
CENTRAL AND WESTERN
TERRITORY
C: 541.699.8347



MARK NELSON
CENTRAL TERRITORY
C: 208.985.4942



TOM PEILA
BIG SKY TERRITORY
C: 406.596.2267



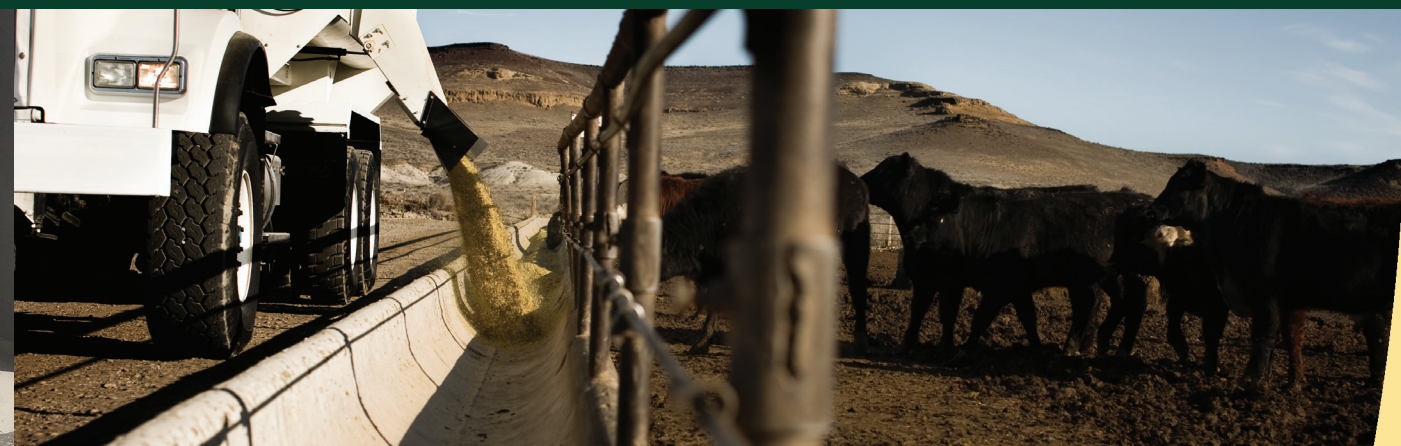
REID BENJERT
NORTHWEST TERRITORY
C: 509.439.9312

MANUFACTURED FEED



With a full selection of feed, from daily rations to individually-tailored supplements, Simplot Western Stockmen's offers manufactured items through our Pride by Simplot product line. It is our mission to supply your animals with the nutritional requirements they need to maximize growth and performance.

Pride by Simplot is available in bulk or packaged shipments from the Simplot Western Stockmen's mill. Shipments can be customized to meet the special needs of individual dairy, beef or cow/calf operations, grower and finish feedlots. We also produce complete feeds for sheep, goats, swine and poultry.



Contact a location near you to find the feed product that suits you best!

SWS PROTEIN BLOCKS



WHY CHOOSE SWS BLOCKS?

- ▶ HIGH QUALITY
- ▶ HANDLING CONVENIENCE
- ▶ COST EFFECTIVE
- ▶ DROUGHT CONDITIONS
- ▶ WEANING CONDITIONS



NUTRIENT ANALYSIS

	PROTEIN (%)	NPN MAX. (%)	CALCIUM (%)	PHOSPHORUS (%)	POTASSIUM (%)	MAGNESIUM (%)	COBALT (PPM)	COPPER (PPM)	IODINE (PPM)	MANGANESE (PPM)	SELENIUM (PPM)	ZINC (PPM)	VITAMIN A (IU/LB)	VITAMIN D (IU/LB)	VITAMIN E (IU/LB)
PRIDE 20 CLASSIC	20	6.89	2.5	0.6	0.9	2.5	NA	NA	NA	NA	NA	NA	NA	NA	NA
PRIDE 20 PREMIUM	20	NA	1.5	0.5	1.1	1.9	4	308	12	515	4	625	30,000	3,000	100
PRIDE 20 ULTRA ALL NATURAL	20	NA	1.5	0.5	1.1	1.9	4	308	12	515	4	625	30,000	3,000	100
* PRIDE 22 ULTRA ALL NATURAL STRESS *	22	NA	1.35	1.5	1.3	1.4	12	906	36	1408	7	1830	90,000	9,000	100
PRIDE 30 CLASSIC	30	9.77	1.15	0.8	1.2	1.5	NA	NA	NA	NA	NA	NA	NA	NA	NA
PRIDE 30 PREMIUM	30	11.49	0.85	0.8	1.1	1.8	18	308	12	515	4	625	40,000	4,000	100
PRIDE 30 ULTRA ALL NATURAL	30	NA	1.35	0.5	1.5	1.5	18	308	12	515	4	625	40,000	4,000	100
PRIDE 40 ULTRA HIGH PROTEIN	40	8.01	1.75	0.5	1.4	0.4	5	572	12	430	4	880	50,000	10,000	100

TARGET FEED RATE: 1.5 LBS PER HEAD / PER DAY ——— "ALL NATURAL" = Only all natural protein sources are used. ——— EXCEPTION TARGET FEED RATE: 1 LB PER HEAD / PER DAY

DESCRIPTIONS AND BENEFITS

PRIDE 20 CLASSIC	Protein source for cattle on moderate quality forage/pasture. No added minerals and vitamins.
PRIDE 20 PREMIUM	All natural protein source for cattle on moderate quality forage/pasture. Includes a robust mineral and vitamin package.
PRIDE 20 ULTRA ALL NATURAL	All natural protein source for cattle on moderate quality forage/pasture. Includes a robust mineral and vitamin package, plus Availa organic sources of Zn/Mn/Cu/Co and Zorien organic Se yeast for improved mineral bioavailability.
PRIDE 22 ULTRA AN STRESS	All natural protein source for stressed cattle. High vitamin levels, Availa organic sources of Zn/Mn/Cu/Co and Zorien organic Se yeast, plus M-Pact MOS/enzyme/probiotic additive to promote digestion, increase DMI, and strengthen immune system.
PRIDE 30 CLASSIC	Protein source for cattle on low quality forage/pasture. No added minerals and vitamins.
PRIDE 30 PREMIUM	Protein source for cattle on low quality forage/pasture. Includes a robust mineral and vitamin package, plus Availa organic sources of Zn/Mn/Cu/Co for improved mineral bioavailability.
PRIDE 30 ULTRA ALL NATURAL	All natural protein source for cattle on low quality forage/pasture. Includes a robust mineral and vitamin package, plus Availa organic sources of Zn/Mn/Cu/Co and Zorien organic Se yeast for improved mineral bioavailability.
PRIDE 40 ULTRA HIGH PROTEIN	High quality protein source for cattle on low quality forage/pasture. Includes a robust mineral and vitamin package, plus Availa organic sources of Zn/Mn/Cu/Co and Zorien organic Se yeast, and Zn/Cu Intellibond chlorides for improved mineral bioavailability.

SWS CALF GRAIN



WHY CHOOSE SWS GRAINS?

- ▶ HIGH QUALITY
- ▶ DIVERSE PRODUCT LINE
- ▶ PALATABILITY
- ▶ DIGESTIBLE FIBER



NUTRIENT ANALYSIS

	FEED RATE (LBS/HD/DAY)	AGE (D=DAYS, M=MONTHS)	CRUDE PROTEIN (%)	CRUDE FAT (%)	CRUDE FIBER (%)	CALCIUM (%)	PHOSPHORUS (%)	SALT (%)	POTASSIUM (%)	SELENIUM (ppm)	VITAMIN A (IU/lb)	VITAMIN D (IU/lb)	VITAMIN E (IU/lb)
PRIDE 18 CLASSIC GROWER	5 - 8	3M-6M	18	4.0	6.4	0.6 - 1.1	0.7	0.2 - 0.4	1	0.3	3,725	1,251	29
PRIDE 18 PREMIUM STARTER / GROWER	5 - 8	3D-6M	18	3.4	5.5	0.5 - 1.0	0.5	0.3 - 0.7	0.8	0.2	6,003	1,137	27
PRIDE 18 ULTRA GROWER	5 - 8	3M-6M	18	3.1	5.2	0.6 - 1.1	0.4	0.3 - 0.6	0.9	0.3	4,500	714	25
PRIDE 20 CLASSIC STARTER (+)	2 - 5	3D-3M	20	3.5	5.6	0.7 - 1.2	0.6	0.2 - 0.4	1	0.3	4,100	1,251	30
PRIDE 20 PREMIUM STARTER	2 - 5	3D-3M	20	3.3	4.5	0.6 - 1.1	0.5	0.3 - 0.7	1	0.3	3,980	1,210	29
PRIDE 20 ULTRA STARTER	2 - 5	3D-3M	20	3.2	5.0	0.6 - 1.1	0.4	0.3 - 0.7	0.9	0.3	4,145	1,230	30

Clarify (April to October)

Interrupts the fly's life cycle rather than direct toxicity.

Prevents development of house flies, stable flies, face flies and horn flies in the manure of treated calves.

ALL CALF GRAINS ARE AVAILABLE IN TEXTURED OR COMPLETE PELLETS

ALL CALF GRAINS INCLUDE RUMENSIN EXCEPT FOR PRIDE 20 CLASSIC STARTER WHICH INCLUDES BOVATEC (+)

DESCRIPTIONS AND BENEFITS

CLASSIC LINE-UP	<p>BASIC PROTEIN: Selected to meet the needs for maintenance of young calves. Mindful of fiber and starch levels.</p> <p>VITAMINS AND MINERALS: Meets the basic nutritional requirement that a young calf needs.</p>
PREMIUM LINE-UP	<p>HIGH QUALITY, COMPLEX PROTEIN: Plant protein sources selected based on sufficient essential amino acids to meet the needs for growth and performance of young calves. Limited distillers, no canola. Focus on digestible fibers and mindful of starch levels.</p> <p>VITAMINS AND MINERALS: Meets a young calf's basic nutritional requirement.</p> <p>ENTERPRISE CALF TECHNOLOGY PACK: Purina's blend of direct fed microbials, prebiotics, essential oils and sweetener.</p>
ULTRA LINE-UP	<p>HIGH QUALITY, COMPLEX PROTEIN: More complex, plant protein sources selected based on sufficient essential amino acids to meet the needs for growth and performance of young calves.</p> <p>VITAMINS AND MINERALS: Meets a young calf's basic nutritional requirement.</p> <p>VICTANT CALF TECHNOLOGY PACK: Purina's premium blend of direct fed microbials, prebiotics, essential oils and sweetener.</p>



WHY CHOOSE SWS MINERALS?

- ▶ CONSISTENCY
- ▶ BALANCED MINERAL NUTRITION
- ▶ HIGH QUALITY
- ▶ ROBUST PRODUCT LINE
- ▶ WEATHERPROOF



NUTRIENT ANALYSIS

STANDARD PRODUCT LINE

	FEED RATE (OZ)	CALCIUM (%)	PHOSPHORUS (%)	VITAMINA (IU/LB)	VITAMIN D (IU/LB)	VITAMIN E (IU/LB)	SALT (%)	POTASSIUM (%)	MAGNESIUM (%)	ZINC (PPM)	COPPER (PPM)	MANGANESE (PPM)	COBALT (PPM)	IODINE (PPM)	SELENIUM (PPM)
SWS PRIDE Classic Minerals															
PRIDE Classic 12:6 Range Mineral	3 - 4	12	6	200(K)	20(K)	200	25	0.2	2	5400	1800	3500	32	96	26
PRIDE Classic 12:8 Range Mineral Low Salt	3 - 4	12	8	200(K)	20(K)	200	5	0.4	1.5	3600	1800	3500	31	96	26
PRIDE Classic 12:6 Range Mineral Bov	1.3 - 6.6	12	6	120(K)	12(K)	400	19	2	1.3	3600	1800	3000	26	71	16
PRIDE Classic 10:6 Range Mineral Rum	1 - 4	10	6	140(K)	14(K)	200	24	0.3	1	3600	3300	3000	23	73	26
SWS PRIDE Premium Mineral															
PRIDE Premium 12:6 NW River Range Mineral	2	12	6	200(K)	20(K)	200	21	0.2	2.5	7200	5000	4700	48	144	53
SWS PRIDE Ultra Minerals															
PRIDE Ultra 12:6 Range Mineral	3 - 4	12	6	160(K)	17(K)	100	20	0.3	1.5	5400	1800	3500	40	99	24
PRIDE Ultra 12:6 Range Mineral Low Salt	3 - 4	12	6	200(K)	20(K)	200	5	0.4	2	5400	1800	3500	33	95	26
PRIDE Ultra 12:12 Range Mineral Low Salt	3 - 4	12	12	200(K)	20(K)	200	5	0.2	2	5400	1800	3500	31	95	26

SPECIALIZED PRODUCT LINE

SWS PRIDE Magnesium Minerals															
PRIDE Classic 12:6 Range Mineral Hi Mag	3 - 4	12	6	200(K)	20(K)	200	7	0.2	10	5400	1800	3500	32	96	26
PRIDE Ultra 12:6 Range Mineral Hi Mag	3 - 4	12	6	160(K)	17(K)	10	7	0.2	8	5400	1800	3500	40	99	24
SWS PRIDE Weaning Mineral															
PRIDE Classic 12:8 Weaning Mineral MPACT	3 - 4	12	8	200(K)	20(K)	200	5	0.4	1.5	5400	1800	3500	33	96	26
SWS PRIDE Dairy Minerals															
PRIDE Enterprise Heifer R1600 Mineral	4	20	0	380(K)	90(K)	3100	22	0.1	0.4	6400	1400	0	91	106	0

MINERAL BLOCKS

SWS Mineral Blocks															
PRIDE Ultra 12:6 Range Mineral Block	3 - 4	12	6	200(K)	20(K)	200	5	0.7	0.3	5400	1800	3500	33	95	26
PRIDE Ultra 12:12 Range Mineral Block	3 - 4	12	12	200(K)	20(K)	200	24	0.5	0.6	5400	1500	3500	33	95	26
PRIDE Ultra 12:6 Range Mineral Garlic Block	3 - 4	12	6	200(K)	20(K)	200	5	0.7	0.3	5400	1800	3500	33	95	26
PRIDE Ultra 12:6 Range Mineral Hi Mag Block	3 - 4	12	6	200(K)	20(K)	200	5	0.4	8	5400	1800	3500	33	95	26
PRIDE Ultra 12:2 Stocker Mineral Garlic Block	2 - 3	12	2	50(K)	0	50	24	0.5	4.0	3600	1500	1300	6	352	35

DESCRIPTIONS AND BENEFITS

STANDARD PRODUCT LINE

ALL USE A PALATABLE DDGS CARRIER AND XTRA DRY FOR WEATHER PROTECTION

SWS PRIDE Classic Minerals	
PRIDE Classic 12:6 Range Mineral	Provides essential nutrition for pasture cattle
PRIDE Classic 12:8 Range Mineral Low Salt	Low salt for consumption challenges
PRIDE Classic 12:6 Range Mineral Bov	FDA approved free choice mineral with Bovatec improves weight gain in growing cattle
PRIDE Classic 10:6 Range Mineral Rum	FDA approved free choice mineral with Rumensin aids in cocci prevention & improves weight gain in growing cattle
SWS PRIDE Premium Mineral	
PRIDE Premium 12:6 NW River Range Mineral	2 oz mineral for areas with consumption challenges, Organic Cu 1/3 of total
SWS PRIDE Ultra Minerals	
PRIDE Ultra 12:6 Range Mineral	Organic Zn/Mn/Cu/Co (Availa 4) @ 1/3 of total
PRIDE Ultra 12:6 Range Mineral Low Salt	Organic Zn/Mn/Cu/Co (Availa 4) @ 1/3 of total, Selenium Yeast, Cu Chloride
PRIDE Ultra 12:12 Range Mineral Low Salt	Organic Zn/Mn/Cu/Co (Availa 4) @ 1/3 of total, Selenium Yeast, Cu Chloride

SPECIALIZED PRODUCT LINE

SWS PRIDE Magnesium Minerals	
PRIDE Classic 12:6 Range Mineral Hi Mag	Increased magnesium level to combat grass tetany in spring, provides essential nutrition for pasture cattle
PRIDE Ultra 12:6 Range Mineral Hi Mag	Organic Zn/Mn/Cu/Co (Availa 4) @ 1/3 of total, increased magnesium level to combat grass tetany in spring
SWS PRIDE Weaning Mineral	
PRIDE Classic 12:8 Weaning Mineral MPACT	MPACT Probiotic/Prebiotic/Enzyme/Yeast to maximize gut health and improve performance
SWS PRIDE Dairy Minerals	
PRIDE Enterprise Heifer R1600 Mineral	Support optimal growth and immunity; use in TMR for 350 – 1200lb animals at a max feed rate of .25lb/HD/Day.

MINERAL BLOCKS

SWS Mineral Blocks	
PRIDE Ultra 12:6 Range Mineral Block	Organic Zn/Mn/Cu/Co (Availa 4) @ 1/3 of total, Selenium Yeast, Cu Chloride
PRIDE Ultra 12:12 Range Mineral Block	Organic Zn/Mn/Cu/Co (Availa 4) @ 1/3 of total
PRIDE Ultra 12:6 Range Mineral Garlic Block	Organic Zn/Mn/Cu/Co (Availa 4) @ 1/3 of total, Includes garlic which aids in repelling insects
PRIDE Ultra 12:6 Range Mineral Hi Mag Block	Organic Zn/Mn/Cu/Co (Availa 4) @ 1/3 of total, Increased magnesium level to combat grass tetany in spring
PRIDE Ultra 12:2 Stocker Mineral Garlic Block	Organic Zn/Mn/Cu/Co (Availa 4) @ 1/3 of total, Zn Chloride, Garlic aids in repelling insects

SWS RANGE CUBE

WHY CHOOSE SWS RANGE CUBE

- ▶ HIGH QUALITY
- ▶ FLEXIBLE FEEDING
- ▶ COST EFFECTIVE
- ▶ DROUGHT CONDITIONS



NUTRIENT ANALYSIS

	FEED RATE (LBS/HD/DAY)	CRUDE PROTEIN (%)	CRUDE FAT (%)	CRUDE FIBER (%)	CALCIUM (%)	P (%)	Mg (%)	K (%)	VITAMIN A (IU/lb)	VITAMIN E (IU/lb)	ZINC (ppm)	Cu (ppm)	Medication Option	Mineral Sources
BEEF CLASSIC 16% RANGE CUBE	2 - 4	16	3	9	1	0.6	0.01	1.2	12,500	25	340	114	None	Sulfates
BEEF PREMIUM 20% RANGE CUBE	2 - 3	20	2.8	5.8	1	0.7	0.03	1.1	17,000	35	455	150	Rumensin	Sulfates
BEEF PREMIUM 30% RANGE CUBE	1 - 2	30	2.4	5.3	1	0.6	0.2	1.2	25,000	50	680	225	Rumensin	Sulfates
BEEF ULTRA 30% RANGE CUBE	1 - 2	30	2.2	3.9	1	0.5	0.1	1.3	25,000	50	680	225	Rumensin	Availa 4 Selenium Yeast

DESCRIPTIONS AND BENEFITS

BEEF CLASSIC 16% RANGE CUBE	Provides protein and energy using all natural protein sources. Supplements poor quality forage/hay and reduces hay requirement.
BEEF PREMIUM 20% RANGE CUBE	Provides protein using all natural protein sources. Feed with moderate quality forage/hay.
BEEF PREMIUM 30% RANGE CUBE	Provides protein using all natural protein sources. Feed with moderate quality forage/hay for a boost of protein.
BEEF ULTRA 30% RANGE CUBE	Provides protein using all natural protein sources and organic trace minerals. Feed with moderate quality forage/hay for a boost of protein in environments with mineral antagonists.

"ALL NATURAL" = Only all natural protein sources are used.

SUPPLEMENTS AND TEXTURIZED CATTLE FEEDS

MEDICATED CATTLE SUPPLEMENTS

PRODUCT NAME	DESCRIPTION
10 gm CTC Pellet	For control or treatment of bovine respiratory disease. Requires a VFD
Amprolium Pellet	For the prevention or treatment of coccidiosis. 5 day treatment knocks out current cocci infections.
Coxy Crunch	For the prevention of coccidiosis. 28 day feeding period covers entire life cycle of cocci-causing organisms.
MGA Pellets	For the control of heat in replacement heifers intended for reproduction.

TEXTURIZED CATTLE FEEDS

PRODUCT NAME	DESCRIPTION
Pride Premium WC 13% Steer Finisher Rum	Mix of rolled corn for energy and pellets for protein/nutrients creates the perfect feed for finishing steers. Medicated with Rumensin for feed efficiency.
Pride Premium 16% Dairy Ration	Rolled corn, rolled barley, and a protein/mineral/vitamin pellet provides an excellent source of energy and nutrients for lactating dairy cattle.



FACEBOOK



INSTAGRAM

Simplot
WESTERN STOCKMEN'S

FEED AND SUPPLEMENTS

POULTRY

PRODUCT	DESCRIPTION
SCRATCH GRAINS	Wholesome grain mixture of corn, wheat, and milo suitable for all poultry.
POULTRY ALL PURPOSE (16%)	Crumbled complete feed containing nutrients essential for all poultry.
POULTRY STARTER (23%)	Crumbled starter ration for poultry up to 6 weeks of age.
POULTRY GROWER (16%)	Crumbled growing ration for young poultry transitioning into adult.
COMPLETE LAYER (16%)	Proper ration formulated for laying poultry. Available as a crumble or pellet.

SWINE

PRODUCT	DESCRIPTION
SWINE STARTER (20%)	Complete pelleted ration for baby swine up to 35 lbs.
SWINE GROWER (19%)	Complete pelleted ration for growing swine between 35-75 lbs
SWINE GROWER CONCENTRATE (36%)	Protein supplement for mixing with corn on farm for a 15% protein ration.
SWINE FINISHER (17%)	Mineral supplement to prevent trace mineral deficiencies.

OTHER

PRODUCT	DESCRIPTION
ALL 4-1 GOAT RATION	Texturized grain ration provides energy, protein, and mineral supplement for all classes of goats.
RABBIT RATION	Balanced pelleted ration contains all essential nutrients for rabbits.

SHEEP / LAMB

PRODUCT	DESCRIPTION
LAMB GROWER	Pelleted 20% protein feed for growing and fattening lambs.
LAMB CREEP & FATTENER	Pelleted 16% protein creep feed for growing and fattening lambs. Medicated with Bovatec® for cocci control.
SELENIUM SHEEP SALT	Salt supplement formulated specifically for sheep in cases of selenium deficiency.
PRIDE PREMIUM 12:6 SHEEP MINERAL	Quality mineral fulfills sheep's trace mineral and vitamin requirements.

MULTI-SPECIES GRAIN MIXES

PRODUCT	DESCRIPTION
BARLEY	Quality energy supplement suitable for all species.
CRACKED CORN	Cracked corn offers increased availability to corn's high energy starch.
COB PLAIN	Mix of rolled corn, whole oats, and rolled barley for a rich source of highly available energy.
COB WITH MOLASSES	Molasses enhances palatability to corn, oats, and barley mix for a rich source of highly available energy.
RBC	Rolled barley and rolled corn blend offers increased availability to high energy starch found in both grains.
RBC WITH MOLASSES	Molasses adds sweetness to enhance energy benefits of rolled barley and rolled corn blend.



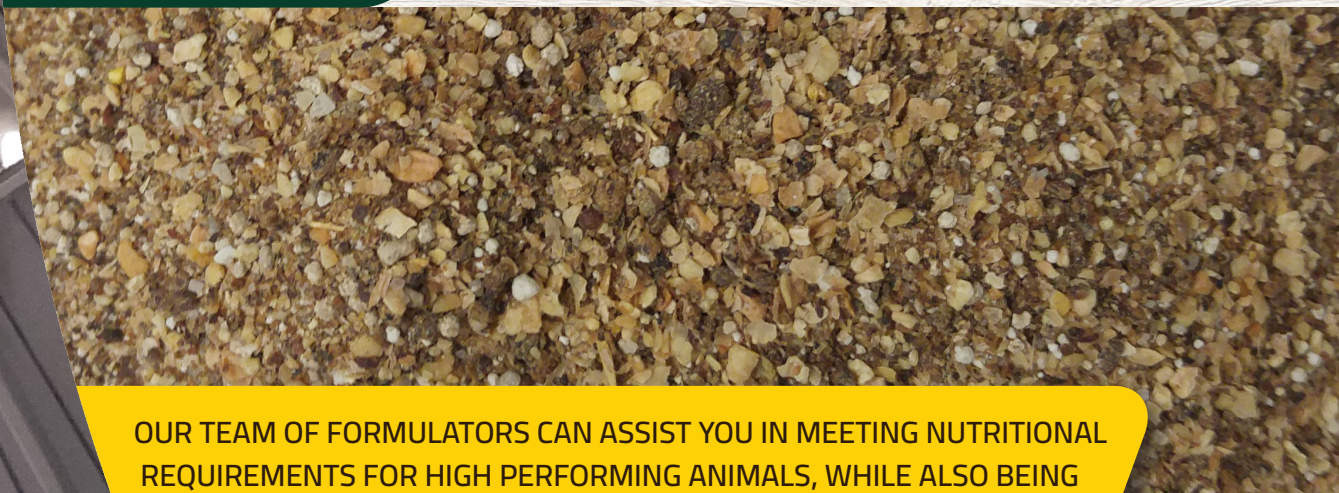
CUSTOM FORMULATIONS

(25 TONS OR GREATER)

At Simplot Western Stockmen's we understand that every animal is different and many require a custom-tailored diet to maximize their performance. Our automated feed mill is capable of manufacturing any specialized formula needed for clientele.

We offer both premixed and finished feed in pellet, block, meal, or texturized form. When your order is finished we can deliver your feed in 50-pound bags, 2,000-pound totes, or in bulk. There are hundreds of options available and ingredients are always of the highest quality.

**SUPERIOR INGREDIENTS
GENUINE SERVICE
EFFECTIVE FEED**



OUR TEAM OF FORMULATORS CAN ASSIST YOU IN MEETING NUTRITIONAL REQUIREMENTS FOR HIGH PERFORMING ANIMALS, WHILE ALSO BEING CONSCIOUS OF COST AND PRODUCT QUALITY.

Give us a call, and let us **help you raise healthy animals!**

GRAIN TERMINALS

We are constantly moving a variety of corn through our commodity terminals and are ready to serve our customers.

Call one of our experienced commodity professionals for bulk shipments of corn out of our terminals in Idaho and Washington.



MOUNTAIN HOME

B&B Mountain Home
2380 NW Granary Rd
Mountain Home, ID 83647

WHOLE CORN

STEAM FLAKED CORN



BURBANK

B&B Wallula
13485 Dodd Rd
Burbank, WA 99323

WHOLE CORN

CRACKED CORN

FINE GROUND CORN



CONTACT OUR COMMODITIES DEPARTMENT!

208.780.4817 OR 208.780.4856



Simplot Western Stockmen's has been selling quality seed for over 35 years. We take pride in offering a variety of performing seeds and strive to choose the best genetics for yield and quality for your farm.



CONTACT THE STORE 208.780.4854

WHY CHOOSE SWS FORAGE?

- ▶ DIVERSE PRODUCT LINE
- ▶ EXCEPTIONAL GENETICS
- ▶ HIGH QUALITY

FOR INFORMATION CONTACT:

ROB ALLISON
208.780.4854
rob.allison@simplot.com



BEST PRACTICES

	PLANTING RATES (POUNDS PER ACRE)	CUT BEST QUALITY	CUT FOR HIGHEST YIELDS
TRI-CAL SUPERIOR FORAGE	100 - 150	BOOT STAGE	HEADING TO SOFT DOUGH
FLEX 719 TRITICALE	100 - 150	BOOT STAGE	HEADING TO SOFT DOUGH
SURGE TRITICALE AWNLESS	100 - 150	BOOT STAGE	HEADING TO SOFT DOUGH
GUNNER TRITICALE AWNLESS (NEW RELEASE FALL OF 2022)	100 - 150	BOOT STAGE	HEADING TO SOFT DOUGH
STOCKFORD FORAGE BARLEY (SPRING PLANTING)	100 - 150	BOOT STAGE	HEADING TO SOFT DOUGH
VERDANT FORAGE BARLEY (FALL PLANTING)	80 - 125	BOOT STAGE	HEADING TO SOFT DOUGH

ALWAYS TEST YOUR PRODUCT BEFORE FEEDING

LATE FALL PLANTING - UP THE RATE TO 20%

DESCRIPTIONS AND BENEFITS

TRI-CAL SUPERIOR FORAGE	FACULTATIVE TRITICALE'S • PLANT FOR SPRING OR FALL
FLEX 719 TRITICALE	PLANT SPRING OR FALL • GREENCHOP OR TRITICALE SILAGE PNW YIELD QUALITY MILK PER TON
SURGE TRITICALE AWNLESS	PLANT SPRING OR FALL • BEST FOR HAY PRODUCTION • USE FOR GRAZING
GUNNER TRITICALE AWNLESS (NEW RELEASE FALL OF 2022)	PRODUCED FOR: GREENCHOP, HAY AND GRAZING YIELD TEST COMPETITIVE WITH 719 BETTER THAN SURGE
STOCKFORD FORAGE BARLEY (SPRING PLANTING)	STOCKFORD TWO ROW HOODED BARLEY • DEVELOPED FOR PNW HAY PRODUCTION OR GREENCHOP • YIELDS AND QUALITY
VERDANT FORAGE BARLEY (FALL PLANTING)	VERDANT 6 ROW HOODED BARLEY • HAY OR GREENCHOP PRODUCTION GOOD WHEN BLENDED WITH TRITICALE • VERY AGGRESSIVE TILLERING BEST PRODUCTION WHEN PLANTING DATE ON, OR BEFORE OCTOBER 10TH

EQUINE FEED
BAGS, TUBS AND PELLETS

ANIMAL HEALTH
ANTACID ANTI-DIARRHEA LAXATIVE
ANTI-INFLAMMATORY ANTIHISTAMINE
ANTIMICROBIAL
ANTISEPTIC TOPICAL ANTI-FUNGAL
BIOLOGICAL VACCINES
DEWORMER
FLY CONTROL
REPRODUCTIVE
SEDATIVE
VITAMIN ELECTROLYTE MINERAL SUPPLEMENT
MEDICAL SUPPLIES, BANDAGE, TAPE AND GAUZE

FARM AND HOME
GROOMING SUPPLIES
HOOF CARE
PREMISE FLY CONTROL
RODENT CONTROL

HARDWARE
BUCKETS / PAILS
FEEDING EQUIPMENT
FENCING
WATER EQUIPMENT



LEARN MORE ABOUT OUR EQUINE PRODUCTS
<https://www.simplot.com/livestock/sws/products#equine>

Why Bluebonnet Feeds?

- ▶ Essential Amino Acids
- ▶ Digestive Aids
- ▶ Full Vitamin Profiles

LEARN MORE ABOUT BLUEBONNET FEEDS

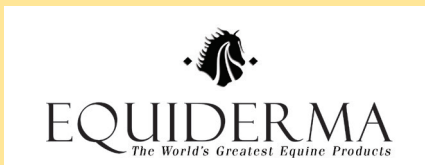


DESCRIPTIONS AND BENEFITS

Bluebonnet® Feeds believes in a world where knowing what goes into your horse's feed is never an obstacle. You'll never see label tricks or vague ingredient lists on their tags - each ingredient is listed by its true name. Safety is a top priority so they keep their facility ionophore-FREE. If an ingredient is not safe for horses, it's simply not allowed on the property.

Intensify® Senior Therapy	Intensify® Senior Therapy is a dust-free feed with ultra small, easy-to-chew pellets that break down quickly. This is the choice for those who want the very best for their horse. A foundation of quality sets this senior feed apart. Consistency of ingredients, easier to absorb minerals, full vitamin profiles, superior amino acids, and a fine-tuned digestive health package help ensure your horse outlives the productive life of their own teeth.
Intensify® Omega Force®	Intensify® Omega Force® is the ultimate performance horse feed. This high calorie, low carb pellet is the perfect choice for those who want the very best for their equine athletes, but the cherry-on-top is the built-in gastric buffer and natural source Vitamin E. A foundation of quality sets this ultra-dense performance feed apart. Consistency of ingredients, easier to absorb minerals, full vitamin profiles, superior amino acids, and a fine-tuned digestive health package help ensure optimum health from the inside out.
Intensify® Growth and Development	Intensify® Growth and Development is the ultimate feed for broodmares and growing horses. This high calorie, low carb pellet is the perfect choice for those who want the very best for their reproduction program. This feed is super-powered with functional ingredients that support better bone density and a healthy immune system. A foundation of quality sets this pelleted feed apart. Consistency of ingredients, easier to absorb minerals, full vitamin profiles, superior amino acids, and a fine-tuned digestive health package help ensure optimum health from the inside out, for mares, fetuses, and growing horses.
Equilene® Pro Care®	Equilene® Pro Care® is the superior choice when digestive health is on the line. This beet-pulp based feed takes a three-prong approach to supporting the gut: 1) buffer stomach acid 2) strengthen intestinal lining 3) support hind gut microbes. Not to mention, it was the first feed on the market with research-proven levels of an ingredient that helps lower inflammation and stress hormone levels.
Horseman's Elite® Mare & Foal	Horseman's Elite® Mare & Foal is an excellent choice for the cost conscious owner that still demands quality for their broodmares and growing horses. This larger "nugget" sized pellet provides all the basics for healthy reproduction and growth.
Horseman's Elite® Senior Care	Horseman's Elite® Senior Care is an excellent choice for the cost conscious owner that still demands quality for their seniors and dust-sensitive horses. This extra-small, easy to chew pellet provides all the basics to help horses outlive the lifespan of their own teeth.

EQUINE BRANDS



TOP BRANDS



“Allflex is the world leader in design, technology, manufacturing and delivery of animal identification for traceability systems across all production. We bring cutting-edge, practical applications of visual, electronic and radio frequency animal identification technology to livestock industry across the world, contributing to a safer global food supply.

Our challenge is to continually bring products, services and advice to the industry that create workable solutions in real-life conditions.”





“Behlen Country is the largest division of Behlen Mfg. Co., headquartered in Columbus, NE. Behlen Mfg. Co. is a locally-owned company providing quality steel products worldwide. Behlen Country is the most comprehensive manufacturer of farm and ranch equipment in all of North America, with continuous improvement and customer satisfaction, our products are designed and tested for ‘real world’ use whether you are a weekend enthusiast or professional rancher.

We offer a complete line of products for the farm and ranch including: gates and panels, tanks/waterers, cattle handling, feeders, equine equipment, small animal/pet equipment and 3 point implements.

Always innovative, flawlessly functional, and super resilient, Behlen Country epitomizes the best in your land!”



“Innovative medicines for people and animals have for more than 130 years been what the research-driven pharmaceutical company Boehringer Ingelheim stands for.

Boehringer Ingelheim is one of the pharmaceutical industry’s top 20 companies and to this day remains family-owned. Day by day, some 50,000 employees create value through innovation for the three business areas human pharmaceuticals, animal health and biopharmaceutical contract manufacturing.”

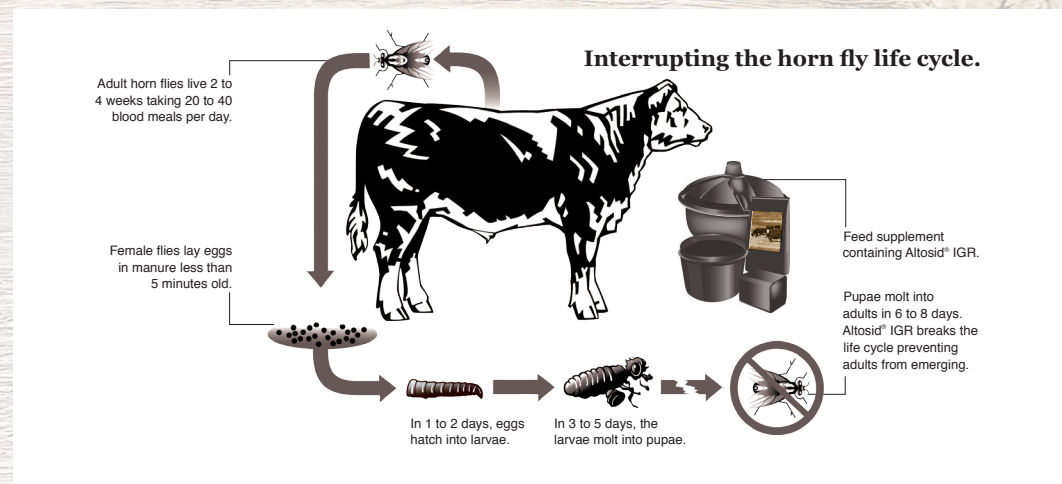




Fly Control Built by *Science*

**FEED-THROUGH FLY CONTROL
REDUCES CATTLE STRESS**

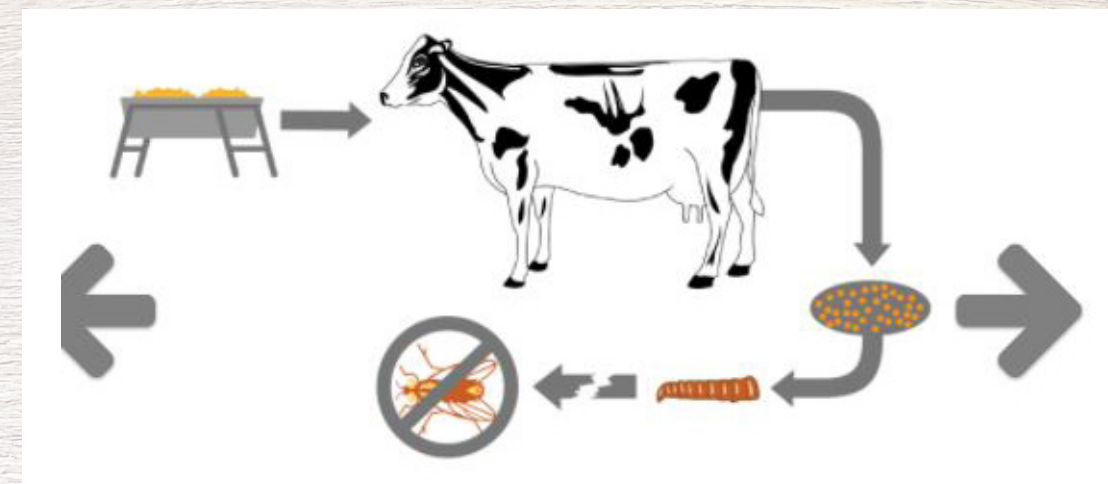
Nuisance flies are a threat to cattle production in North American pasture cattle. These annoying, disease-carrying, biting pests increase cattle stress, lower resistance to illness, and can seriously affect feeding. Central Life Sciences offers the insect growth regulator Altosid® IGR Feed-Thru for cattle in pasture, which works in cattle manure where flies lay their eggs, to put a stop to future fly populations.



**ELIMINATE THE STRESS OF
BITING FLIES IN CONFINED CATTLE**

Nuisance flies like horn flies and face flies carry disease, increase cattle stress, and lower resistance to illness, making them a potential threat to production in confined cattle.

ClariFly® Larvicide from Central Life Sciences is an insect growth regulator that works as a feed-through in cattle manure, where flies lay their eggs, to stop future populations of biting, disease carrying adult flies that affect the bottom line.





CONTROL PESTS WHERE YOU LIVE AND WORK

For rural residents and agricultural operations, Central Life Sciences offers a full line of products to help control problem insects that carry disease and inhibit production under the Starbar® brand. This breadth of product offerings helps farm and ranch owners prevent and control insect pests, including nuisance flies, mosquitoes and fire ants. The Starbar® brand has been trusted by agricultural communities for over 40 years.



“Country Vet® Brand Pet Foods is a high quality, highly digestible, and palatable brand of pet food. All products are manufactured by C.S.D. Nutrition LLC in our Sioux City, Iowa Plant.

We maintain an approved supplier list for control of all incoming ingredients to assure our customers of a safe high performing pet food.

Our extensive delivery system, which has been in existence since 1956, allows our customers to have fresh product available at all times.

You'll find that our complete line of pet food meets the needs of all pet life stages.”



DATAMARS



“Datamars is one of the leading global suppliers of high performance unique-identification solutions, specializing in radio frequency identification (RFID) technology. Our enduring focus on innovation specific to the three markets we serve - companion animal ID, livestock ID and textile ID - have earned us a reputation worldwide for unsurpassed quality and performance.

Our extensive experience and profound understanding of our customers’ requirements allows us to provide complete and customized identification solutions that enable our clients to optimize critical operations and maximize efficiency.

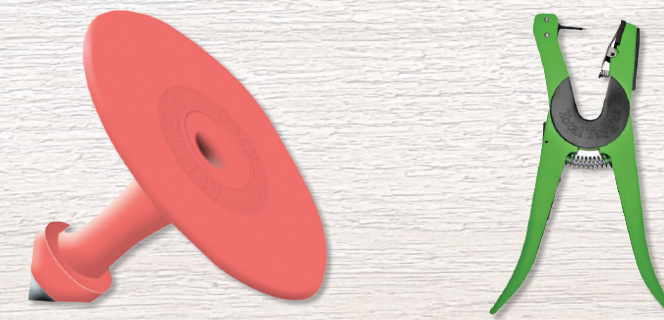
Datamars is an ISO 9001 certified company. We are the only vertically integrated supplier in our markets, allowing us to maintain an unprecedented level of operational excellence in our manufacturing. Datamars employs more than 900 people worldwide with offices in Europe, Asia, and the Americas.”



Destron Fearing™

In 1945 Destron Fearing™ created the Country’s first commercially marketed visual identification tags for livestock. This is the foundation of today’s animal identification solutions for producers worldwide.

Destron Fearing™ continues its tradition of leadership by manufacturing a range of innovative visual and electronic identification products, helping a range of livestock producers, companion animal owners, horse owners, wildlife managers and official agencies manage animals.





“At Diamond, we believe every pet, from purebred show animal to shelter puppy or kitten, is worthy of the best nutrition. We also believe every pet owner deserves a great value. When you buy Diamond, you can be confident you are getting premium nutrition without the premium price.”

All Diamond®, Diamond Naturals® and Diamond Naturals® Grain-Free formulas are made with the highest quality products and manufactured in America in state-of-the-art facilities. With carefully determined levels of protein, fat and other essential nutrients, Diamond pet foods are formulated to enhance the performance, appearance and overall health of your pet, day after day.”



www.durvet.com

“When Durvet opened for business in 1970, its doors were literally attached to a van carrying its animal health care products warehoused in a tiny 500 square foot rented facility. Durvet was the first entity in the OTC animal health market to be involved with both manufacturing and distribution, and this vision proved to be the model for the animal health supply chain business.”

Over the years, Durvet has diversified its inventory with equine care and pet health lines. The Durvet organization employs 41 people at its Blue Springs headquarters and supports 50+ member distribution points with nearly 700 sales professionals strategically located around the U.S. to meet the needs of livestock, equine and pet owners - offering them the product performance and affordability they demand.”

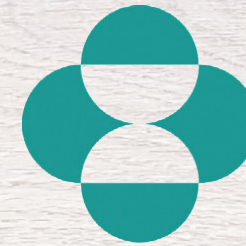
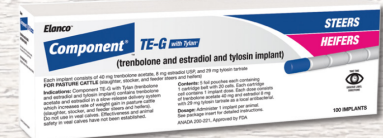
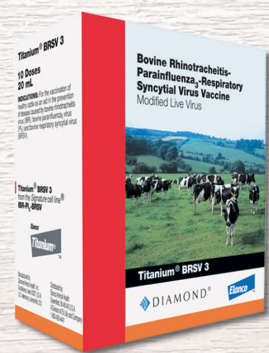




“At Elanco, we provide those who raise and care for animals with solutions that empower them to advance a vision of food and companionship enriching life.

We understand the powerful role healthy animals play in making lives better. As pets increasingly become important parts of our families, so too does the need to help them live longer, healthier, higher-quality lives. As the global population grows, so too will the need to meet the demand for safe, affordable food for all.

We strive to develop and deliver products safe for consumers, animals and the environment through innovation and a shared vision to enrich the life of people worldwide. We provide those who raise and care for animals with a comprehensive set of animal health products and knowledge services that empower them to address the global challenges of a diverse and changing world.”



MERCK

Animal Health

“Merck Animal Health has a rich heritage of scientific excellence and innovation. It is the foundation of our future and the inspiration for our daily work. Our core values are driven by a desire to be visionary in our thinking, and ever ready to respond to our dynamic industry.

By collaborating closely with each other and our customers, we build strong partnerships in an effort to improve the health of animals around the world. We approach our work every day with a deep sense of responsibility - to our customers, consumers, animals, society and the planet.”





"Miller Manufacturing Company is a market-leading manufacturer, distributor and marketer of farm, ranch, and pet products which are sold under the brand names of Little Giant®, Hot-Shot®, Springer Magrath®, Double-Tut®, Pet Lodge™, and API®. At the core of Miller's values is our commitment to American manufacturing, with most of our products designed, manufactured, and distributed here in the United States.

Miller has remained focused on its core channel in the farm and ranch market since 1941 while continuing to provide innovative products alongside time-tested solutions to a broad range of customers. As a one-stop shop for companies looking for a full breadth of product for the farm and ranch consumer, Miller continues to manufacture quality, cost-competitive products to our customers."



POWDER RIVER®

• LIVESTOCK HANDLING EQUIPMENT •

"Since 1938 Powder River has provided the highest quality and most durable products available for the livestock industry. Powder River's squeeze chutes, working systems, classic gates and panels are unsurpassed in quality, functionality and reliability, making them an overall great investment. We continue developing cutting edge products to assist today's producer in a successful operation."

Powder River products are not just limited to cattle handling. We produce several top quality items for the equine industry including stalls, round pens, gates and feeders. We also provide cowboy tough rodeo equipment, cattle guards, dog kennels and more. There is no better time than now to consider Powder River products for your operation."



PURINA
AMPLI-CALF®

"AMPLI-Calf® starters and growers contain a combination of unique, proprietary ingredients, including a natural palatability enhancer, an immune modulating compound, a prebiotic dietary fiber that maintains lower gut health and a unique source of fiber for better digestion."

LAND O LAKES®
ANIMAL MILK PRODUCTS CO.

"Our milk replacers are research proven and calf-raiser approved to best meet the needs of your calves. With highly digestible ingredients, Land O' Lakes Animal Milk Products milk replacers support performance for long-term production potential."



LAND O LAKES®
ANIMAL MILK PRODUCTS CO.



Since, 1994 Real-Tuff, Inc. has been owned & operated by Alain Comte of Canada and Dave Dahlberg of Clearbrook, MN.

The owners of the Real-Tuff Livestock Handling Equipment are farmers/ranchers themselves. At Real-Tuff we continue to make improvements due to our hands on usage, because we personally use the equipment on our own farm. The livestock handling equipment is put to the test on their cows.

Real-Tuff sells a full line of livestock handling equipment including, cattle squeeze chutes, portable handling systems, cattle alley sections, cattle handling tubs, 1/4 circular maternity pens, corral panels, bale feeders, stand alone panels, windbreaks panels, walk in gate panels, door trimming chutes, cattle scales with cattle ready livestock handling equipment, cattle loading chutes, double alley, splitting alleys, chute carts, panel carts, and much much more!

IF IT DOESN'T SAY REAL TUFF, IT'S NOT "REAL TUFF!"





“Established in 1967 in Cody, Wyoming, Y-TEX Corporation is dedicated to the livestock industry. For over 50 years our skilled people and state of the art facilities have ensured superior product quality and customer satisfaction.

Extensive research and development, field testing, plus excellent craftsmanship combine for solid product performance. Y-TEX offers the best animal identification, pest control and animal health delivery system products in the industry.”



Vitalix® is an American Family owned company that specializes in quality low moisture cooked molasses supplement tubs made from the best all-natural ingredients available. Since 1989, Vitalix® has been at the forefront of the tub business, committed to leading the way in how controlled consistent nutrition is delivered to almost all species of livestock.

**LIVESTOCK IS YOUR LIVELIHOOD,
TUBS ARE OUR EXPERTISE.**

Every day you face nutritional decisions that affect the profitability of your operations. The mission behind the Vitalix® advantage is built on a foundation of trust and partnerships through our revolutionary cooking methods, advanced technologies, and our proprietary nutritional packages to deliver the best value for your feed dollar. Vitalix® offers a complete range of tubs for any season, condition, and forage quality to meet the nutritional needs of your livestock. Vitalix® quality livestock supplements lead our customers to new levels of performance, efficiency, convenience and profits.





“Our goal is always the same: to create high-quality seed that delivers better yields for growers. As conditions evolve, we have the infrastructure, experience and creativity to meet the world’s growing demands.”

For nearly 60 years, W-L Alfalfas has been offering alfalfa varieties built on a strong foundation of research and development to help farmers reach and exceed their crop potential.

As a thought leader in the alfalfa industry, we strive to offer the latest insights available to growers on the best alfalfa technology, breakthrough products, and profitable concepts.”



“Zoetis discovers, develops, manufactures and commercializes a diverse portfolio of animal health medicines and vaccines designed to meet the real-world needs of veterinarians and livestock farmers and companion animal owners they support.”

Leading the way are Zoetis field representatives, who develop beneficial business relationships with customers that endure for years.

These relationships are supported by the technical and veterinary specialists who provide in-depth technical expertise and disease education.

By having an on-the-ground presence, Zoetis can react quickly to local-market needs and be well positioned to help our customers continually increase their business productivity and sustain long-term success.”

Bovi-Shield GOLD



INFORCE 3



One Shot/One Shot Ultra

